

Ultron

AiO Windows Tablet



10.1"

15.6"

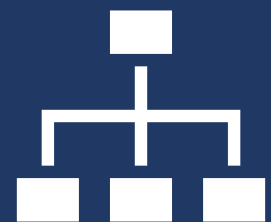
21.5"



Commercial Grade



All-in-One



Highly-expandible

Product overview

Ultron windows tablet Series is designed to be placed individually as a All-in-One kiosk. There are VESA mounting holes at the back of the tablet for easy installation.

Available in 10.1", 15.6", 21.5" widescreen

The most common operating system

Easy deployments with various VESA mounting

10.1" / 15.6" / 21.5"

		J1900			3865U (Kaby Lake)			i3-7100U (Kaby Lake)			i5-7200U (Kaby Lake)		
Screen size		10.1"	15.6"	21.5"	10.1"	15.6"	21.5"	10.1"	15.6"	21.5"	10.1"	15.6"	21.5"
Panel info.	Resolution	1280 x 800	1920 x 1080	1920 x 1080	1280 x 800	1920 x 1080	1920 x 1080	1280 x 800	1920 x 1080	1920 x 1080	1280 x 800	1920 x 1080	1920 x 1080
	Brightness	350 cd/m2	220 cd/m2	220 cd/m2	350 cd/m2	220 cd/m2	220 cd/m2	350 cd/m2	220 cd/m2	220 cd/m2	350 cd/m2	220 cd/m2	220 cd/m2
	Contrast ratio	800:1	800:1	1000:1	800:1	800:1	1000:1	800:1	800:1	1000:1	800:1	800:1	1000:1
	Aspect Ratio	16:10	16:9	16:9	16:10	16:9	16:9	16:10	16:9	16:9	16:10	16:9	16:9
	Active Display Area	134.8 x 216.2 mm	344.16 x 193.59mm	476.06 x 267.786mm	134.8 x 216.2 mm	344.16 x 193.59mm	476.06 x 267.786mm	134.8 x 216.2 mm	344.16 x 193.59mm	476.06 x 267.786mm	134.8 x 216.2 mm	344.16 x 193.59mm	476.06 x 267.786mm
	Viewing angle	H:170°/ V:170°	H: 178°/ V:178°	H:170°/ V:170°	H:170°/ V:170°	H: 178°/ V:178°	H:170°/ V:170°	H:170°/ V:170°	H: 178°/ V:178°	H:170°/ V:170°	H:170°/ V:170°	H: 178°/ V:178°	H:170°/ V:170°
	Touch Tech.	10 point cap touch (6H semi-tempered glass)											
CPU & System	CPU	Intel Celeron J1900 (Quad Core)			3865U (2 cores)			Intel Core i3 7100U (2 cores)			Intel Core i5 7200U		
	Base Frequency	2.0 GHz			1.80 GHz			2.40GHz			2.5 GHz		
	CPU Turbo Boost	2.42 GHz			/			/			3.1 GHz		
	CPU Cache	2MB			2 MB SmartCache			3 MB SmartCache			3MB		
	BIOS	AMI 8MB UEFI BIOS											
RAM	RAM	4GB DDR3L @1333 MHz (upgradable)			Dual Channel 2 x DDR4 2133 MHz			Dual Channel 2 x DDR4 2133 MHz			4GB DDR4 2133 MHz (upgradable)		
ROM	Storage	64GB SSD (upgradable)			128GB			128GB			128GB SSD (upgradable)		
Software	OS	Pre-installed Windows 10 IoT core (License is optional)			Win 10 64bit, Linux 32 / 64 bit			Win 10 64bit, Linux 32 / 64 bit			Pre-installed Windows 10 IoT core (License is optional)		
GPU	GPU chipset	Intel HD Graphic (Bay Trail, 688 - 854 MHz)			Intel HD Graphis 610			Intel HD Graphics 620			Intel HD Graphic620		
	VGA	Yes			No			No			No		
	Display Port	No			Yes			Yes			Yes		
	HDMI	Yes											
	# of display supported	2			HDMI+DP+eDP/LVDS (3 Display)			HDMI+DP+eDP/LVDS (3 Display)			3		
Audio	Codec	Realtek HD ALC662											
	I/O	Line-out x 1, Mic-in x 1			Line-out x 1, Mic-in x 1			Line-out x 1, Mic-in x 1			Line-out & Mic-in Combo x 1		
	Speaker	5W x 2											
Ethernet	Controller	Realtek RTL8111F Gigabit LAN			Intel i211 - 10/100/1000Mbps			Intel i211 - 10/100/1000Mbps			Intel i211 - 10/100/1000Mbps		
	Connector	2 x RJ45											
	Wake on LAN	Yes											
Storage	Slot	1 x mSATA/ SATA 2.0; 1 x SATA2.0			SATA 3.0 x 2 (Celeron for 1 only)			SATA 3.0 x 2 (Celeron for 1 only)			1 x M.2; 2 x SATA3.0		
Housing	Material & color	Metal housing with Matte black paint											
I/O	USB 2.0	2			0			0			0		
	USB 3.0	1			4			4			4		
	Audio	Line-out x 1; Mic-in x 1			Line-out x 1; Mic-in x 1			Line-out x 1; Mic-in x 1			Line-out & Mic-in Combo x 1		
	LAN	2			2			2			2		
	HDMI	1 (HDMI1.4)											
	Display port	0			1			1			1		
	VGA	1			0			0			0		
Upgradable I/O	USB2.0	4			4			4			4		
	RS232	6 (COM2 able to change to RS485) (Only COM2 & 4 with power supply)			5 (Only COM2 & 4 with power supply)			5 (Only COM2 & 4 with power supply)			4 (with power supply)		
	RS485	1 (switch from COM2)			1			1			2		
	PS/2	1 (Keyboard or Mouse)			1 (Keyboard or Mouse)			1 (Keyboard or Mouse)			No		
	GPIO	8			8			8			8		

	LPT	1	1	1	0
AV capability	Camera	Front Facing Camera 2/5 MP fixed focus (Optional)			
Hardware monitor	Sensor	CPU temperature sensor; Voltage sensor; Watchdog; Plug and Start			
	Included in Box	Ultron open frame tablet, Power Adaptor, Power cable			
	Consumption	TBC			
	Power input	12V 5A	1 x 12V DC - IN/4 PIN Power	1 x 12V DC - IN/4 PIN Power	12V 5A
	Operating Environment	Operating: 32°F to 104°F (0°C to 40°C); Storage: -4°F to 122°F (-20°C to 50°C) Operating: 20%-80%; Storage: 10%-95%	Operating: -40°C ~ 60°C; Storage: -40°C ~ 80°C	Operating: -40°C ~ 60°C; Storage: -40°C ~ 80°C	Operating: 32°F to 104°F (0°C to 40°C); Storage: -4°F to 122°F (-20°C to 50°C) Operating: 20%-80%; Storage: 10%-95%
	Certification	CE, FCC, ROHS			
	Language	Multi language			
	VESA	VESA 75			

Options information

Option	Type	Remarks
3G/4G module	Mini-PCI-e add-on	WCDMA / HSDPA 2100 / 1900 / 850 (900) MHz GSM / GPRS / EDGE 850 / 900 / 1800 / 1900 MHz
Windows 10 IoT core license	/	/
RAM	Extra RAM	4/ 8GB
SSD	Mini-PCI-e add-on	64/ 128 GB
Front Camera	Extra PCB	2 Megapixel with Fixed Focus / 5Megapixel with Auto Focus
Barcode module	USB accessories	1D barcode/ 2D barcode
RFID / NFC module	USB accessories	ISO 14443 T=CL, T=CL, 1K/4K, ISO 18092
Printer	RS232/USB accessories	Receipt thermal printer

To find out more about our extensive range of Glorystar solutions, go to www.glorystargroup.com, or call the office nearest you. For more information, please contact us at sales@glorystargroup.com. Glorystar reserves the right to change or update, without notice, any information contained herein; to change, without notice, the design, construction, materials, processing or specifications of any products; and to discontinue or limit production or distribution of any products. Glorystar, the Glorystar logo, STAR CONTROL and STAROS are either trademarks or registered trademarks of Glorystar Group Limited. All other trademarks are the property of their respective owners.